



WELLNESS

Enriching Life Through Design

At SGPA, we enrich life through design by creating memorable places that promote human connection and well-being. Through collaboration, building on our expertise, and empowering our employees, we strive to find thoughtful design solutions that meet our clients' goals and bring new vitality to our neighborhoods and communities.

SGPA ARCHITECTURE AND PLANNING

San Diego

3111 Camino Del Rio North, Suite 500
San Diego, CA 92108
619.297.0131

San Francisco

200 Pine Street, Suite 500
San Francisco, CA 94104
415.983.0131

Fresno

1111 East Herndon Avenue, Suite 217
Fresno, CA 93720
559.553.0131

sgpa.com

ABOUT SGPA





ABOUT SGPA

SGPA Architecture and Planning is a leading design firm with offices in San Francisco, San Diego, and Fresno. For over five decades, we’ve become specialists in projects that feature or blend retail, community, recreation, wellness, education, and housing.

As trusted advisors, we help each client discover what’s most important to the project’s success before we start design. That’s how the original vision reaches its utmost potential. Through creativity and effective management, we guide clients toward viable and sustainable solutions that produce value over time and delight users every day.

SGPA believes in employing a step-by-step design process. The initial design process employs quick alternative design studies to test the project program and explore alternative solutions. This process allows for greater flexibility and collaboration, and can be completed with a low up-front investment. Once the project program has been established, more detailed studies are utilized to finalize and test the design.

Established

1969 | 53 years in business

Staff

- 39 Employees
- 15 Registered Architects
- 9 LEED Accredited Professionals
- 16 BIM Modelers
- 8 Administrative Staff

Small & Green

Certified Small Business Enterprise
U.S. Green Building Council Member

See Our Work Online

www.sgpa.com



RANGE OF OUR FULL-SERVICE CAPABILITIES

- Site Planning
- Master Planning
- Feasibility Studies
- 3D Planning Studies
- Testing multiple site plan options
- Planning
- Entitlements
- Community Outreach
- Designing for Future Adaptability
- Adaptive Re-Use
- Historical and Cultural Integration
- Sustainable Solutions
- Branding and Lifestyle Graphics
- Landscape, Lighting, and Facade Improvements

TEAM



STUART LYLE
ARCHITECT
PRESIDENT, DIRECTOR OF
SAN FRANCISCO



PAMELA CAMACK
ARCHITECT
PRINCIPAL, WELLNESS STUDIO
LEADER



VICTORIA GRAY
ARCHITECT
ASSOCIATE, PROJECT
MANAGER



HILARY BACKMAN
DESIGNER
SENIOR ASSOCIATE, SENIOR
DESIGNER



MISSION STATEMENT

Our **goal** is to create transformative human-centered design inspired by a holistic view of health, guided by research, evidence, and visionary technology. We aim to improve the quality of life of every person that uses or encounters our work.

Our **journey** always begins with one focus: collective wellness. We care about the total health of the person, the organization, the community, and the environment. We are conscious that our designs will have a far-reaching effect on human health. Our adherence to particular values - human dignity, respect, and integrity - serve as the primary guiding principles for our decision making process.

Our **practice** is rooted in the belief that research, evidence, and an understanding of new technological advancements are essential to the design and construction of all health and wellness facilities. Visioning and imagining beyond programmatic needs yield evolutionary and revolutionary solutions that mark the difference.

Our **process** is set to make sense of the complexities and lead the project team to deliver excellent service and an outstanding project. Listening and teamwork, supported by field expertise and high technical skill, define our approach.

Our **hope** is that the work is a structure through which we can honor life at all ages, live well, and prosper together.

SGPA WELLNESS STUDIO HISTORY

SGPA's substantial healthcare/wellness experience started with its first project, the Casa De Mañana Senior Living facility, which was designed approximately twenty-five years ago. Since then, our team has designed over a million square feet and thousands of units in Continuing Care Retirement Community facilities, which includes Independent Living, Assisted Living, Memory Care, Skilled Nursing, and Vitality Centers.

Under the leadership of our former Senior Living and Wellness Director, Stuart Stoller, the Studio designed the firm's first community health center in 2004. It was a mixed-use project in Oakland California called the Native American Health Center at the Seven Directions. From that point on, the studio has continued to design clinics for women's health, behavioral health, substance abuse, nutritional counseling, dental, laboratory, social services, and pediatric services.

SGPA's expansion of our portfolio into Healthcare and Wellness has effectively allowed for our experts to provide precise services in health and wellness. The Senior Living and Wellness Studio is led by Pamela Camack, Principal, who works closely and collaboratively with the design team at SGPA, Clients, and contractors to ensure that the project vision and goals are achieved.

The synergy of different studio focuses strengthen SGPA's capabilities and services, bringing SGPA's team, talent, and touch full circle to create more transformative places that offer total care for our collective well-being.

SELECTED PROJECT TYPES

- Outpatient medical clinics
- Dental clinics and offices
- Medical office buildings
- PACE facilities
- Skilled nursing facilities
- Senior living & memory care
- Vitality & wellness centers
- Community health centers
- Tenant Improvements
- Lifestyle & entertainment centers
- Transit oriented developments
- Affordable & market rate housing
- Hospitality
- Faith-based developments
- HUD construction & renovation
- Renovations

TEAM





STUART LYLE

ARCHITECT, AIA

PRESIDENT, DIRECTOR OF SAN FRANCISCO

Since 1988, Stuart has focused his career on all aspects of project management from preliminary planning and government entitlement processing through construction administration. His role as President and the Director of the San Francisco office is to ensure that all staff have the necessary resources and support available to do their best work.

Stuart specializes in transforming underutilized spaces and structures into new and vibrant environments. Staff and clients alike rely on Stuart's ability to focus a diverse team on a creative solution to a design problem.

As someone who grew from student intern to President at SGPA, Stuart believes that assisting people with their professional growth is the most satisfying part of his job. He takes pride in managing a great group of people and hopes to give them all the same opportunities that he has had over the years.

CREDENTIALS

- Registered Architect, California C24741
- Registered Architect, AZ, OR, WA, UT, NV, HI
- Montana State University, Bachelor of Architecture with Honors
- Montana State University, Master of Architecture

AFFILIATIONS

- American Institute of Architects
- National Council of Architectural Registration Boards

BACKGROUND

- Over 29 years of experience
- With SGPA since 1993
- Focus on planning entitlement processing for retail + mixed use projects

PROJECT EXPERIENCE

WILLIAM JENKINS HEALTH CENTER ▪ Richmond, CA

LifeLong Medical Care

Programming, Schematic Design, Entitlements, Design Development, Construction Documentation, Permitting, and Construction Administration for a new 30,000 SF, 3-story medical office building and clinic in downtown Richmond. The new building was constructed on the site of the existing clinic, which was housed in modular buildings also designed by SGPA. The Clinic will house Primary Care, Urgent Care, Imaging, Dental Labs, and a Wellness Center.

WEST BERKELEY HEALTH CENTER ▪ Berkeley, CA

LifeLong Medical Care

Project programming, design, and documentation for the renovation of and three-story addition to an existing 12,000 square foot National Historic Landmark facility into a 19,000 square foot safety net clinic. Extensive neighborhood and agency involvement was required to secure project entitlements. Project received the Preservation Award from the Berkeley Architectural Heritage Association.

ASHBY HEALTH CENTER ▪ Berkeley, CA

LifeLong Medical Care

Office space is converted into an OSHPD 3-compliant safety net clinic that offers homeless outreach, wellness services, and the integration of HIV and women's health into primary medical care. SGPA is providing programming, building assessment, and design for this new 11,139-SF tenant improvement.

LITTLEJOHN COMMONS ▪ Alameda, CA

Housing Authority of the City of Alameda

A part of a larger redevelopment of the historic Del Monte warehouse, the Alameda Housing Authority is providing a new senior housing community to serve the island's low-income senior population. The project is financed with California tax credits and exceeds California energy code requirements through various measures including the use of rooftop solar photovoltaic panels. Extensive landscaping and community gardens all contribute to the high quality of life of this active senior living community.

ON LOK HOUSE OCCUPIED RENOVATION ▪ San Francisco, CA

On Lok, Inc.

This concrete building, constructed in 1979, is undergoing renovation including replacement of all windows, interior finish, kitchen, bath, and accessibility upgrades; new roofing and guardrails, and mechanical, plumbing, and lighting upgrades to achieve greater energy conservation.



PAMELA CAMACK

ARCHITECT, LEED AP, NCARB

PRINCIPAL, WELLNESS STUDIO LEADER

As SGPA's Wellness Studios Leader, Pamela brings health care and wellness expertise to the team. Her passion for these caring environments and knowledge of best practices translates into healing and working spaces that are sensitive to the needs of the patients and efficient for staff.

With over 17 years of professional experience, Pamela blends strong management skills with creative 3D modeling expertise to help her clients visualize and complete successful projects. Known for persistently tackling challenging issues, she has built a reputation with clients, contractors, and teammates for getting things done thoroughly and on time.

As a Registered Architect and LEED Accredited Professional, she believes in incorporating sustainable concepts into her projects in ways that add value to owners and users alike. She is also responsible for providing strategic ideas that influence firmwide operations and business development.

CREDENTIALS

- Registered Architect, California C32910
- LEED Accredited Professional
- California Polytechnic State University San Luis Obispo, Bachelor of Architecture
- National Council of Architectural Registration Boards

AFFILIATIONS

- San Diego Region Committee Chair for LeadingAge California
- Subject Matter Expert for the California Architect's Board Supplemental Examination Development
- ACE Mentor San Diego

BACKGROUND

- Over 17 years of experience
- With SGPA since 2006

PROJECT EXPERIENCE

PACE CENTER FOR OLDER ADULTS ▪ San Diego, CA

Family Health Centers of San Diego

The original retail box, which was designed by SGPA in 1998, was repurposed into a new HCAI-3 compliant healthcare clinic and Program of All-inclusive Care for the Elderly (PACE®) facility. The facility offers medical, physical therapy, rehabilitation, behavioral health, adult day-care, dining, library, lounge, transportation, and administrative services to serve low-income frail elderly participants. The project includes ample natural light from the addition of new skylights and windows, new canopy and passenger loading area, a vertical garden with green walls, and an outdoor patio.

PACE CENTER FOR OLDER ADULTS AND FAMILY COUNSELING CENTER ▪ Oceanside, CA

Family Health Centers of San Diego

Tenant Improvement and renovation of a 1960's era building into a new Family Counseling Center, HCAI-3 compliant healthcare clinic and Program of All-inclusive Care for the Elderly (PACE®) facility. The facility offers medical, physical therapy, rehabilitation, behavioral health, adult day-care, dining, commercial kitchen, library, lounge, transportation, new covered passenger loading area, and administrative services to serve low-income participants and patients from the local community.

WEST BERKELEY HEALTH CENTER ▪ Berkeley, CA

LifeLong Medical Care

Project programming, design, and documentation for the renovation of and three-story addition to an existing 12,000 square foot National Historic Landmark facility into a 19,000 square foot safety net clinic. Extensive neighborhood and agency involvement was required to secure project entitlements. Project received the Preservation Award from the Berkeley Architectural Heritage Association.

SEACREST VILLAGE, MULTIPLE PROJECTS ▪ Encinitas, CA

Seacrest Village Retirement Communities

For over 16 years SGPA has provided facility programming and master planning for a 13.8 acre campus including multiple new buildings; independent living senior apartments, memory care facility, vitality center, central plant, and storage. Also included are other related improvements to the existing facility including core renovation of their commercial kitchens and skilled nursing facility.

M'COLL HEALTH CENTER ▪ San Diego, CA

St. Paul's Senior Services

Renovation of a Skilled Nursing Facility to allow the addition of a larger emergency generator that can serve the entire facility to allow the facility to serve as a shelter for residents in the area during an emergency. The project also includes replacement of the Nurse Call and Wander prevention system. This project is being funded by the Community Development Block Grant program.



HILARY BACKMAN

DESIGNER

SENIOR ASSOCIATE, SENIOR
DESIGNER

With over 25 years of experience, Hil has designed a range of successful projects in California and abroad. He has been fortunate to design many building types including Residential, Retail, Senior Living, Hotels, Education, and Offices; as well as large scale planning projects from Eco-Tourism to Urban Planning. At SGPA, Hil blends effective communication skills and a flexible approach to design while working with clients, consultants, and colleagues to create special places that resonate with end users.

He is also involved with the architectural and planning communities with associations such as ICSC, NIAOP, ULI, and BIA. Hil enjoys bringing life to projects, "taking it from dream to reality." He enjoys the collaborative process of working with clients and draws his inspiration from past and current architectural masters defining design with mass, texture, light, time and space.

CREDENTIALS

- Dalhousie University, Masters of Architecture
- Dalhousie University, Bachelor of Arts in Environmental Design Studies
- Concordia University, Bachelor of Fine Arts - Painting and Drawing

AFFILIATIONS

- International Council of Shopping Centers (ICSC)
- Urban Land Institute (ULI)
- San Diego Housing Federation (SDHF)

BACKGROUND

- Over 25 years of professional experience
- With SGPA since 2015

PROJECT EXPERIENCE

PINNACLE ASSISTED LIVING AND MEMORY CARE ▪ Murrieta, CA

Pinnacle Senior Living

Designed to accommodate a variety of care levels, while also facilitating the lifestyle, physical requirements and personal preferences of its residents, and maintaining a residential style and scale. The community includes 109 units, 87 assisted living units, and 22 memory care units.

PINNACLE ASSISTED LIVING AND MEMORY CARE ▪ Murrieta, CA

Pinnacle Senior Living

Designed to accommodate a variety of care levels, while also facilitating the lifestyle, physical requirements and personal preferences of its residents, and maintaining a residential style and scale. The community includes 109 units, 87 assisted living units, and 22 memory care units.

SEACREST VILLAGE, MULTIPLE PROJECTS ▪ Encinitas, CA

Seacrest Village Retirement Communities

For over 16 years SGPA has provided facility programming and master planning for a 13.8 acre campus including multiple new buildings; independent living senior apartments, memory care facility, vitality center, central plant, and storage. Also included are other related improvements to the existing facility including core renovation of their commercial kitchens and skilled nursing facility.

COVENANT LIVING AT MOUNT MIGUEL ▪ Spring Valley, CA

Covenant Living

For over 16 years SGPA has provided facility programming and master planning for a 13.8 acre campus including multiple new buildings; independent living senior apartments, memory care facility, vitality center, central plant, and storage. Also included are other related improvements to the existing facility including core renovation of their commercial kitchens and skilled nursing facility.

SHOPS AT LA JOLLA VILLAGE ▪ La Jolla, CA

Shopcore

Completed in 2016, this renovation project is 210,631 SF and has three components: the demolition of the existing retail and residential buildings, reconfiguration of the main parking field, and construction of three new retail buildings, including a new Nordstrom Rack and a Whole Foods market.

ENCINITAS MARKETPLACE ▪ Encinitas, CA

(private client)

Designing and rebranding Existing Center.



VICTORIA GRAY

ARCHITECT

ASSOCIATE, PROJECT MANAGER

In likeness with SGPA's motto, enhancing everyday life, Victoria pursued a career in architecture motivated by the sense of pride she feels after being able to design a space from scratch that is both habitable and enjoyable.

Since joining SGPA in 2013, Victoria has developed niche specialties, including senior and affordable housing, clinic spaces, retail, and outdoor plazas which allow for interaction between users. She is also instrumental in the production of design and construction documents for projects ranging in completeness from planning and site design to building design and construction.

CREDENTIALS

- Registered Architect, California C38089
- California Polytechnic State University San Luis Obispo, Bachelor of Architecture

BACKGROUND

- Over 9 years of professional experience
- With SGPA since 2013

PROJECT EXPERIENCE

WILLIAM JENKINS HEALTH CENTER ▪ Richmond, CA

Lifelong Medical Care

Programming, Schematic Design, Entitlements, Design Development, Construction Documentation, Permitting, and Construction Administration for a new 30,000 SF, 3-story medical office building and clinic in downtown Richmond. The new building was constructed on the site of the existing clinic, which was housed in modular buildings also designed by SGPA. The Clinic will house Primary Care, Urgent Care, Imaging, Dental Labs, and a Wellness Center.

WEST BERKELEY HEALTH CENTER ▪ Berkeley, CA

Lifelong Medical Care

Project programming, design, and documentation for the renovation of and three-story addition to an existing 12,000 square foot National Historic Landmark facility into a 19,000 square foot safety net clinic. Extensive neighborhood and agency involvement was required to secure project entitlements. Project received the Preservation Award from the Berkeley Architectural Heritage Association.

ASHBY HEALTH CENTER ▪ Berkeley, CA

Lifelong Medical Care

Office space is converted into an OSHPD 3-compliant safety net clinic that offers homeless outreach, wellness services, and the integration of HIV and women's health into primary medical care. SGPA is providing programming, building assessment, and design for this new 11,139-SF tenant improvement.

MISSION NEIGHBORHOOD HEALTH CENTER ▪ San Francisco, CA

Mission Neighborhood Health Center

The occupied renovation of existing 5,000 SF clinic spaces to upgrade and replace finishes, optimize work flow, space allocation, and to improve the team care model.

ON LOK HOUSE OCCUPIED RENOVATION ▪ San Francisco, CA

On Lok, Inc.

This concrete building, constructed in 1979, is undergoing renovation including replacement of all windows, interior finish, kitchen, bath, and accessibility upgrades; new roofing and guardrails, and mechanical, plumbing, and lighting upgrades to achieve greater energy conservation.

WELLNESS EXPERIENCE



LIFELONG WILLIAM JENKINS HEALTH CENTER RICHMOND, CA

Programming, Schematic Design, Entitlements, Design Development, Construction Documentation, Permitting, and Construction Administration for a new 30,000 SF, three-story medical office building and clinic in downtown Richmond.

Project Description

The new building was constructed on the site of the existing clinic, which was housed in modular buildings also designed by SGPA. The Clinic will house Primary Care, Urgent Care, Imaging, Dental Labs, and a Wellness Center.

Project Features

- HCAI-3
- +/- 30,000 SF of Clinic Space
- Three stories
- 30 Exam Rooms
- 8 Dental Stations
- Urgent Care Center with access to Imaging Lab
- Community Meeting Space/Garden
- Federally Qualified Health Center (FQHC)
- Design-Assist Procurement
- Phased construction
- Transition Planning/Swing Space Management





LIFELONG WEST BERKELEY HEALTH CENTER BERKELEY, CA

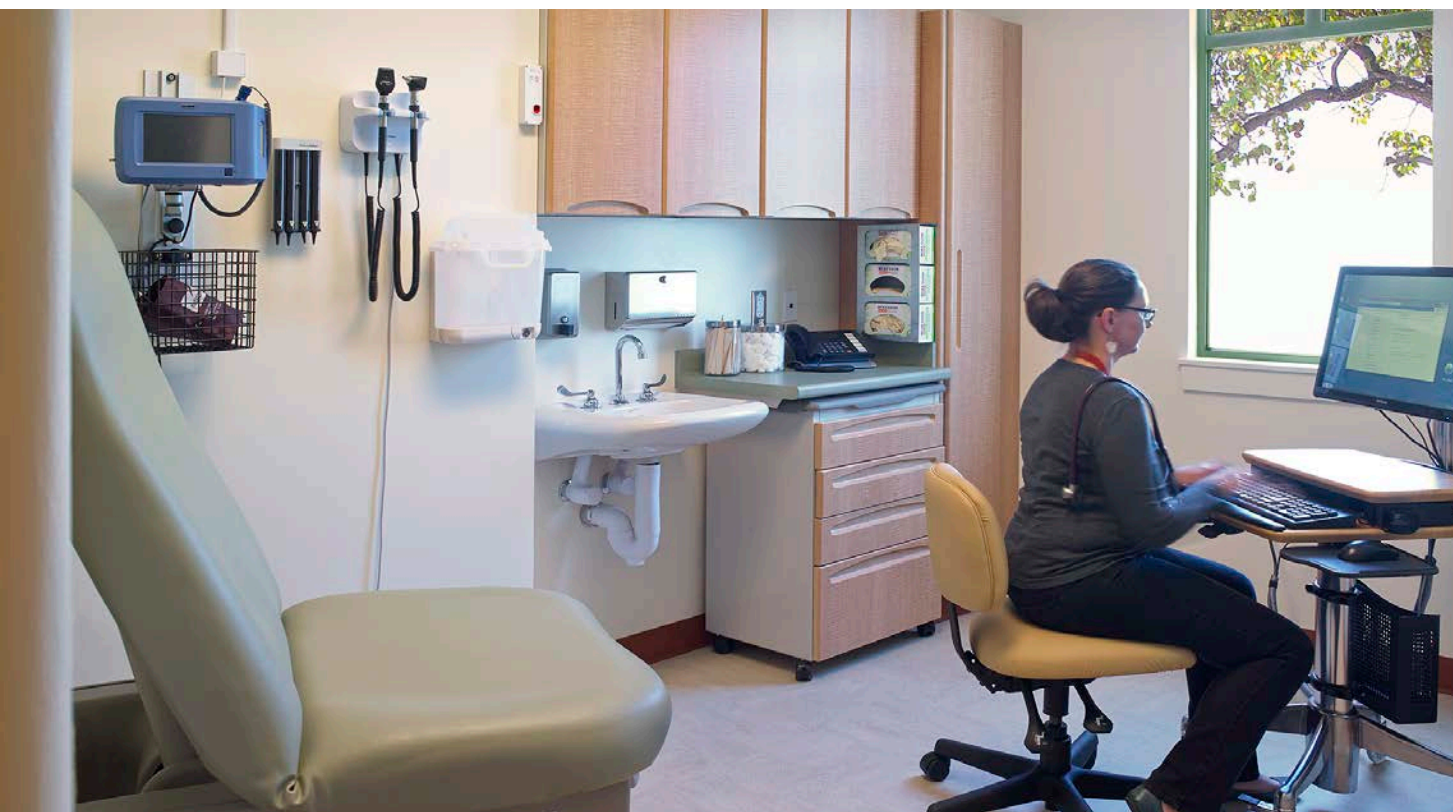
Design and construction administration for 11,090 SF, three-story addition, and an 8,480 SF tenant improvement of an existing, two-story National Historic Register building.

Project Description

Project programming, design, and documentation for the renovation of and three-story addition to an existing 12,000 SF National Historic Landmark facility into a 19,000 SF safety net clinic. Extensive neighborhood and agency involvement was required to secure project entitlements. Project received the Preservation Award from the Berkeley Architectural Heritage Association.

Project Features

- HCAI-3
- Meets LEED Silver criteria
- 27 exam rooms, triage area, and mental health offices
- Exercise and instructional room for prenatal group education
- Nutritional instruction kitchen
- Sensitive design that respects both the interior and exterior character of the historic building
- Adherence to County of Alameda Green Building Guidelines for design and construction
- Federally Qualified Health Center (FQHC)
- Phased construction
- Transition Planning/Swing Space Management, including design and coordination of modular clinic to maintain operations throughout construction



LIFELONG ASHBY HEALTH CENTER BERKELEY, CA

Office space is converted into an HCAI-3 compliant safety net clinic that offers homeless outreach, wellness services, and the integration of HIV and women's health into primary medical care.

Project Description

SGPA is providing programming, building assessment, and design for this new 11,139 SF tenant improvement.

Project Features

- HCAI-3
- 22 exam rooms
- Six counseling rooms
- Triage center including wound care and phone triage
- Wellness center including acupuncture, group exercise, and prenatal counseling
- Exceptional level of universal design features to accommodate multiple disabilities
- Maximizes patient exposure to natural light, views, and foliage
- Meets LEED Gold criteria
- Federally Qualified Health Center (FQHC)



LIFELONG PINOLE HEALTH CENTER PINOLE, CA

Office space is converted into an HCAI-3 compliant safety net clinic that offers homeless outreach, wellness services, and the integration of HIV and women's health into primary medical care.

Project Description

SGPA is providing programming, building assessment, and design for this new 11,139 SF tenant improvement.

Project Features

- HCAI-3
- 22 exam rooms
- Six counseling rooms
- Triage center including wound care and phone triage
- Wellness center including acupuncture, group exercise, and prenatal counseling
- Exceptional level of universal design features to accommodate multiple disabilities
- Maximizes patient exposure to natural light, views, and foliage
- Meets LEED Gold criteria
- Federally Qualified Health Center (FQHC)



FAMILY HEALTH CENTER FOR OLDER ADULTS OCEANSIDE, CA

HCAI-3 compliant Family Counseling Clinic and Programs of All-Inclusive Care for the Elderly (PACE®) facility.

Project Description

Tenant Improvement and renovation of a 1960's era building into a new Family Counseling Center, HCAI-3 compliant healthcare clinic and Program of All-inclusive Care for the Elderly (PACE®) facility. The facility offers outpatient medical, dental, physical therapy, rehabilitation, behavioral health, adult day-care, dining, commercial kitchen, library, lounge, transportation, new covered passenger loading area, and administrative services to serve low-income participants and patients from the local community.

Project Features

- 17,000 SF PACE Clinic and 3,200 SF Family Counseling Center
- Site accessibility and access upgrades
- Energy Efficient LED lighting
- New windows and storefronts
- Abundance of natural lighting from skylights
- Outdoor patio/garden
- Commercial Kitchen
- Emergency Generator



FAMILY HEALTH CENTER FOR OLDER ADULTS SAN DIEGO, CA

Conversion of an existing retail suite into an HCAI-3 compliant Community Care Health Clinic and Programs of All-Inclusive Care for the Elderly (PACE®) facility.

Project Description

The existing retail building, which was designed by SGPA in 1998, is being repurposed into a new outpatient healthcare clinic and PACE facility. A new canopy and passenger loading area will be added for participant drop off and pickups. The facility will offer medical, pharmacy, physical therapy/rehabilitation, behavioral health, adult day-care, dining, library, lounge, transportation, and administrative services to serve local low-income frail elderly participants.

Project Features

- 20,000 SF
- Vertical garden & green walls
- Energy Efficient LED lighting
- New windows and storefronts
- Abundance of natural lighting from skylights
- Outdoor patio/garden
- Commercial Kitchen
- Emergency Generator



EXCELSIOR HEALTH CENTER SAN FRANCISCO, CA

Programming, Schematic Design, and Entitlement Support for a new 12,000 SF clinic within an exciting new mixed-use multi-family affordable housing development in San Francisco.

Project Description

The new community clinic will be built on the second level, above a grocery store and below the multi-family affordable housing units. The health center will serve the Excelsior neighborhood and replace Mission Neighborhood Health Center's existing clinic. Services include Primary Care, Dental, Mental Health, and Wellness programming.

Project Features

- 12,000 SF of Clinic Space
- 16 Exam Rooms
- Six Dental Care Stations
- Community Meeting Space/Garden
- Federally Qualified Health Center (FQHC)



EXCELSIOR HEALTH CENTER SAN FRANCISCO, CA

Programming, Schematic Design, and Entitlement Support for a new 12,000 SF clinic within an exciting new mixed-use multi-family affordable housing development in San Francisco.

Project Description

The new community clinic will be built on the second level, above a grocery store and below the multi-family affordable housing units. The health center will serve the Excelsior neighborhood and replace Mission Neighborhood Health Center's existing clinic. Services include Primary Care, Dental, Mental Health, and Wellness programming.

Project Features

- 12,000 SF of Clinic Space
- 16 Exam Rooms
- Six Dental Care Stations
- Community Meeting Space/Garden
- Federally Qualified Health Center (FQHC)



MISSION HEIGHBORHOOD HEALTH CENTER SAN FRANCISCO, CA

The occupied renovation of existing clinic spaces to upgrade and replace finishes, optimize workflow and space allocation, and to improve the team care model.

Project Description

The new community clinic.

Project Features

- 5,000 SF of Clinic Space
- 16 Exam Rooms
- New flooring and casework
- Accessibility upgrades
- Improved waiting area spaces
- Federally Qualified Health Center (FQHC)
- HCAI-3



MONUMENT CORRIDOR HEALTH CENTER CONCORD, CA

Building shell renovation and tenant improvements for a new outpatient facility serving low-income families in the Monument Boulevard District area.

Project Description

The new community clinic.

Project Features

- Designed to LEED Silver criteria
- 14,122 SF, 0.84-acre site
- Two stories
- Full dental clinic
- Full medical clinic
- Community and clinical health education programs
- Laboratory services
- Social services support
- Regional administrative hub for scattered site health centers in two counties
- Design and location of new elevator improves visibility of building entrance
- Solar thermal installation for hot water supply
- HCAI-3



SEVEN DIRECTIONS NATIVE AMERICAN HEALTH CENTER OAKLAND, CA

Integrating affordable family apartments with full-service community-based medical care, the Seven Directions mixed-use building provides outpatient primary care, mental health, dental health, and nutrition counseling for residents of Oakland's Fruitvale district.

Project Description

Sponsored by the Native American Development Corporation, the clinic's interior and exterior design evoke traditional Native American building and art motifs.

Project Features

- 20,000 SF community clinic
- Outpatient primary care
- Mental health
- Dental health
- Nutrition counseling
- Enclosed parking garage
- Native American art and imagery incorporated throughout
- Outdoor spaces designed for Native American healing ceremonies
- PCBC Gold Nugget Award of Merit – Best Mixed-Use Project



WOMEN'S COMMUNITY CLINIC SAN FRANCISCO, CA

Consulting services for an extensive site search progressed to programming, design documentation, and construction administration of this clinic tenant improvement.

Project Description

Renovation for a community clinic offering resources to women in San Francisco.

Project Features

- 6,000 SF of Clinic Space
- Six exam rooms
- Three education rooms
- Computer Internet station for use by clients
- Exercise and instructional room for prenatal group education
- Coordination services for clinic vendors including IT, furnishing and interior design, security, signage, environmental and telephone
- Utilization of Historic Building Code to negotiate new occupancy of building basement with city building official
- Adherence to San Francisco Green Business Guidelines for design and construction
- HCAI-3



KEIRO SENIOR HEALTHCARE LOS ANGELES, CA

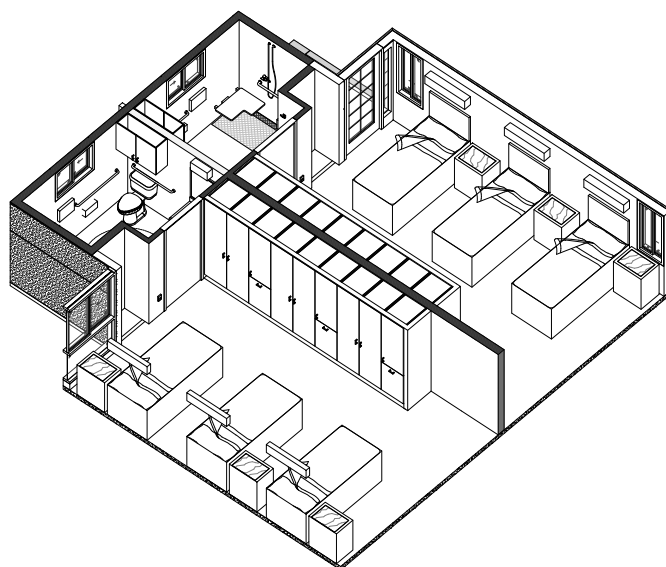
At this skilled nursing and dementia care facility, which serves the Japanese American community, the south wing is being renovated into a full memory care residence.

Project Description

The bed count will be reduced from three beds per room to two beds per room. In doing so, this multi-phased project will provide new private bathrooms, new nurses' and support stations, and create a more residential environment for residents to live and thrive.

Project Features

- 19,000 SF
- 32 bedrooms for 64 residents
- Single story facility with full landscaped and secure gardens
- New servery to accommodate meals in the dining room
- Full bathrooms in each bedroom
- New finishes throughout the facility
- Upgraded building systems
- HCAI-2



SEACREST VILLAGE CORE RENOVATION ENCINITAS, CA

After 30 years, the Core of this thriving Retirement Community is being renovated.

Project Description

This project includes renovation of the commercial kitchen, main dining room, lobby/lounge, wellness center, independent living residential unit, public restrooms, employee breakroom, offices, meeting room/private dining room, laundry facilities, central plant upgrades, chilled water piping replacement, electrical bus-duct replacement, new rooftop HVAC equipment, and reframing a new roof.

Project Features

- 16,300 SF interior renovation
- Occupied Skilled Nursing Renovation including renovation of the Satellite Kitchen and pantry areas (HCAI-2)
- Transition Planning includes: temporary kitchen trailers, temporary parking lot addition, and temporary dining facilities
- New roof over private dining room



SEACREST VILLAGE GOLDBERG HEALTH CARE CENTER ENCINITAS, CA

Renovation of this 56-bed skilled nursing facility enhances quality of care, resident amenities, and efficiency for caregivers.

Project Description

Project programming, design services, construction documents, HCAI permitting and construction administration services.

Project Features

- HCAI-2
- Complete renovation of the resident units including new finishes, furniture and toilet room renovation
- In the main dining room, designed new casework for a serving station, new floor finishes, new lighting and new furniture
- New finishes, furniture and casework for the assisted dining room
- Updated nurse station, medication room, nurse's office, seating areas, and hair salon
- Total redesign of tub/shower rooms from institutional model to resort spa model
- Replaced corridor finishes, new ceiling lights and tiles, new wall sconces and door surrounds
- New nurse call system
- Upgraded fire alarm system to code



BROOKSIDE COMMUNITY HEALTH CENTER RICHMOND, CA

Conversion of an existing building into a community medical clinic took five months from inception of design drawings to completion.

Project Description

Due to accessibility constraints, with only stairs connecting the ground level to the basement, all major clinic functions are kept on the ground level within a 2,500 SF footprint. The architectural team worked with the City to obtain approval for their design of a dumbwaiter system to connect the two levels of the building so the large basement could easily be used for storage and retrieval of medical records.

Project Features

- Waiting room and reception
- Nurse's station
- Medical education room
- Six exam rooms
- Manager and financial screener's office
- Offices for three providers
- Data entry room
- Phlebotomy area
- Laboratory

NEVIN AVENUE

11TH STREET



COMMUNITY HEALTH CLINIC OLE NAPA, CA

In response to a dramatically increasing population of pediatric patients, renovations to this medical and dental health center make the facility more family friendly.

Project Description

Renovation of colors, finishes and furnishing for 8,800 SF of the health center, to increase pediatric comfort and wayfinding.

Project Features

- 2.1 acres
- Two stories
- 27,275 SF
- Creation of designated waiting areas for dental, medical, family/pediatric and adults
- Creation of new outdoor and indoor play areas for pediatric patients
- Child-engaging decor, focused on local Napa Valley fauna
- New partitioning to "corral" wandering children
- Child-stimulating art and games incorporated into low partitions and cabinetry
- Federally Qualified Health Center
- HCAI-3



AWARDS AND REFERENCES





RELATED AWARDS

CCFC DESIGN AWARD

Community College Facility Coalition

For: SDCCD Mesa Commons Cafeteria and Bookstore

ULI HEALTHY PLACES AWARD

Urban Land Institute

For: SDCCD Mesa Commons Cafeteria and Bookstore

BEST COMMERCIAL REAL ESTATE AWARD

San Diego Business Journal

For: Cedros 330

HEALTHY PLACE CROWN JEWEL AWARD

Urban Land Institute - San Diego

For: County of San Diego Waterfront Park and Parking Structure

NATIONAL AWARD OF EXCELLENCE - CIVIC

Design-Build Institute of America

For: County of San Diego Waterfront Park and Parking Structure

DESIGN EXCELLENCE IN RESTORATION AND RE-USE AWARD

Berkeley Architectural Advocates

For: LifeLong West Berkeley Health Center

HISTORICAL PRESERVATION AWARD

Berkeley Architectural Heritage Association

For: LifeLong West Berkeley Health Center

GOLDEN NUGGET GRAND AWARD GREENPOINT-RATED COMMUNITY OF THE YEAR

Pacific Coast Builders Conference

For: Jack London Gateway

GOLDEN NUGGET AWARD OF MERIT - BEST INFILL, REDEVELOPMENT, OR REHABILITATION SITE PLAN

Pacific Coast Builders Conference

For: Jack London Gateway

AIA ORCHID AWARD

American Institute of Architects

For: SDCCD Mesa Commons Cafeteria and Bookstore

GOLDEN NUGGET AWARD OF MERIT - BEST MIXED-USE PROJECT

Pacific Coast Builders Conference

For: Seven Directions Apartments and Clinic

NEIGHBORHOOD PLANNING AWARD

Inland Empire Section of the American Planning Association

For: City of Rancho Mirage Section 19 Specific Plan

PROJECT INNOVATIONS - EXEMPLARY PROJECT

Buildings Magazine

For: CreekBridge Village Salinas

GOLDEN NUGGET GRAND AWARD - MASTER PLANNED PROJECT OF THE YEAR

Pacific Coast Builders Conference

For: Rivermark Village

GOLDEN NUGGET GRAND AWARD OF MERIT - BEST MIXED-USE PROJECT

Pacific Coast Builders Conference

For: Oceanview Village

GRAND AWARD FOR BEST COMMUNITY TOWN PLAN - 100 ACRES OR MORE CO-WINNER

Pacific Coast Builders Conference

For: Rivermark Village



CLIENT REFERENCES

SOUTH CAMPUS PLAZA ■ San Diego, CA

San Diego State University

Robert Schulz | University Architect

T: 619.594.6017 | E: rschulz@sdsu.edu

CAMINO, FOUNDERS, AND SACRED HEART HALL ■ San Diego, CA

University of San Diego

Zach Randel | Senior Project Manager

T: 619.248.4601 | E: zrandel@sandiego.edu

COMMUNITY LEARNING CENTER ■ San Diego, CA

MiraCosta Community College District

David Dunn | CEM Campus Manager (Kitchell)

T: 619.992.1148 | E: ddunn@kitchell.com

MESA COMMONS CAFETERIA AND BOOKSTORE ■ San Diego, CA

San Diego Community College District

Brian Browning | Project Manager (Gafcon)

T: 619.277.4576 | E: bbrowning@gafcon.com

CONTINUING EDUCATION BUILDING ■ San Diego, CA

San Diego Community College District

Lance Lareau | District Architect

T: 619.388.6546 | E: llareau@sdccd.edu

KEARNY HIGH SCHOOL, MIRA MESA HIGH SCHOOL ■ San Diego, CA

San Diego Unified School District

German Reate | Project Manager

T: 760.845.2982 | E: greate@sandi.net

SEACREST VILLAGE, VARIOUS PROJECTS ■ Encinitas, CA

Seacrest Village Retirement Communities

Pam Ferris | President and CEO

T: 760.632.0081 | E: pferris@seacrestvillage.org

EMBARK APARTMENTS AND QUETZAL GARDENS ■ Oakland/San Jose, CA

Resources for Community Development

Carolyn Bookhart | Director of Housing Development

T: 510.841.4410 | E: cbookhart@rcdev.org

"SGPA is an industry leader in virtual construction and design. I was extremely impressed with the knowledge and expertise of the SGPA team regarding BIM. Their leadership guided our construction team to implement the project's 3D model in the field. SGPA's 3D design model had resolved all major conflicts and system clashes before the project was bid to the trade contractors. That directly reduced the amount and number of change orders associated with the project."

—Kevin Smart, Construction Manager | PCL Construction Services

